

- (V+2753.6) C-3
- (V+2628.6) C-2
- (V+2535.6) C-1
- (V+2486.6) C-7

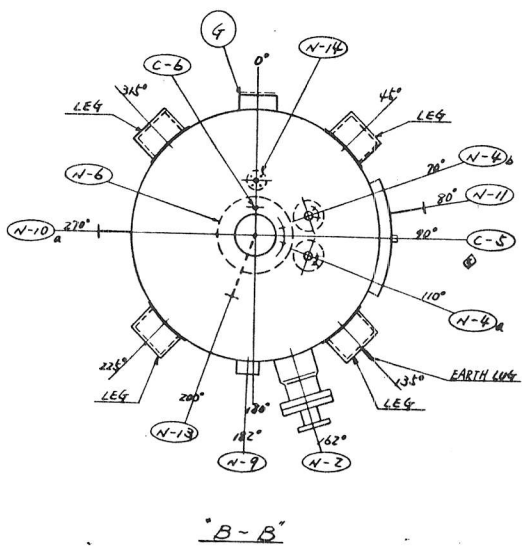
- (V+5'-10 1/2") N-10
- (V+711.2) M-1
- (V+320.7) N-11
- (V+228.6) N-2
- (V+228.6) C-5
- T.L. V ± 0

NOZZLE NO.	SIZE	RATING	TYPE	FACE	NOZZLE THK
C-7	1 1/2"	ANSI 16 6000	H. C. P.		
C-6	1 3/4"	ANSI 16 6000	"		
C-5	1"	ANSI 16 3000	"		
C-4	1"	ANSI 16 3000	H. C. P.		
C-3	1"	ANSI 16 600	WN RF	SCA 160	
C-2	1 1/2"	ANSI 16 600	"	"	
C-1	1 3/4"	ANSI 16 3000	WN RF	SCA 160	
M-1	1 20"	ANSI 300 16	LWN RF	1.88" ± 0.15" DEPT (1.46" ± 0.2" DEPT)	
N-14	1 1"	ANSI 300 16	LWN RF	0.622" (1.6.42)	
N-13	1 3/4"	ANSI 16 300	WN	"	SCA 160
N-12	1 2"	ANSI 16 150	LWN	"	0.45" (1.6.2)
N-11	1 2"	ANSI 16 150	"	"	0.32" (1.6.2)
N-10	2 1/2"	ANSI 16 300	LWN RF	"	0.622" (1.6.7)
N-9	1 1"	ANSI 300 16	PAD	FM	
N-8	1	SPECIAL	PAD		
N-6	1 10"	ANSI 300 16	LWN RF	1.88" ± 0.15" DEPT (1.46" ± 0.2" DEPT)	
N-5	1 1/2"	"	LWN RF		0.762" (1.6.5)
N-4	1 2"	"	PAD	FM	
N-3	1 2"	"	PAD	FM	
N-2	1 6"	ANSI 300 16	LWN RF	2.78" (1.6.2)	
N-1	1 3/4"	ANSI 300 16	LWN RF	2.78" (1.6.2)	

REV	DATE	DESCRIPTION	BY	CHKD	APPD	DATE	DESCRIPTION	BY	CHKD	APPD	DATE	DESCRIPTION
1	APR. 25 1957	1. GENERAL REVISION					1. CHANGED C-2, C-5, C-5					1. CHANGED ORIENTATION OF TERMINAL BOX ON MOTOR
2		2. ISSUED FOR FABRICATION					2. CHANGED NOZZLE PROJECTION LENGTH OF N-6					

NOTE

1. THE AGITATOR IS EXCLUDED FROM ASME CODE WORK.  
攪拌機本体は ASME CODE 適用外とする。
2. ALL BOLT HOLES SHALL STRADDLE CENTER LINE UNLESS OTHERWISE NOTED.  
ボルト穴の振り分けは軸線外中心線に対して振り分けのこと。
3. ALL INTERNAL SURFACE SHALL BE FINISHED BY #300 MESH BUFFING PLUS POLISHING BY WHITE COLORING COMPOUND.  
本体内面及び内部品外表面はバフ#300仕上げと白粉の研磨仕上げのこと。



1084

AGITATOR TYPE LEVEL  
R (DETECTOR)  
INHERS)

PRESSURE VESSEL DESIGN DATA

	SHELL	JACKET
CODE	ASME SECT. VIII DIV. 1 (U STAMP) 1983 EDITION UP TO WINTERKING'S ADDENDA	
STANDARD	ANSI B.16.5-1981	
TYPE	VERTICAL WITH SCRAPER	
CAPACITY (NOMINAL)	1056 gal. (4 m <sup>3</sup> )	
FLUID CIRCULATED	PR & AD	ICW
DESIGN PRESS. (PSIG)	360 (37.37%CL) 100 (70.3%CL)	
DESIGN TEMP. (°F)	176 (80°C)	140 (76.1°C)
OPERATING PRESS. (PSIG)	383 ~ 427	42.6
OPERATING TEMP. (°F)	127 ~ 142	104
SHOP HYDRO TEST PRESS. (PSIG)	901 (63.1%CL) 179 (126%CL)	
CORROSION ALLOWANCE (INCH)	1/16 (CS EXTERIOR) 1/16 (SURFACE)	1/16 (INTERIOR) 1/16 (SURFACE)
JOINT EFFICIENCY (CYL/HD)	1.0 / 1.0	0.65 / —
PWHT	NO	NO
RADIOGRAPHY	100%	NO
WELD FINISH	NO	
WELDER'S QUALIFICATION	ASME SECT. IX	
SHOP PAINTING	REFER TO CT 21953	
TOLERANCE	REFER TO CT 21855	
MATERIALS	SHELL	SA316-70 SA316-70-304CLAD
	HEAD	SA316-70 SA316-70-304CLAD
	FORGING	SA105 SA105+TP304 DEPO OR SA182-F304
	NOZZLE NECK	SA105
ALLOWABLE STRESSES	17500 psi	17500 psi
IMPACT REQUIREMENT	NO	NO
CET		32°F
WEIGHT (LBS)	EMPTY **	28,000 (12,700kg)

REFERENCE DOC.

- TOLERANCE LIST ----- CT 21855  
 HYDROSTATIC TEST PROCEDURE ----- CT 21856  
 NONDESTRUCTIVE EXAMINATION REQUIREMENTS ----- CT 21854  
 PAINTING PROCEDURE ----- CT 21953  
 WELDING PROCEDURE SPECIFICATION ----- WP 86-056  
 INSPECTION PROCEDURE ----- 04-2251

FOR CONSTRUCTION

L	NAME PLATE (FOR AGITATOR)					
J	MECHANICAL SEAL		1 SET			CK69157
H	AGITATOR ASSEMBLY		1 SET			CK69158
G	NAME PLATE		1			CK69157
F	EXTERNAL CLIP		1 SET			CK69154
E	LIFTING LUG		1 SET			CK69153
D	MANHOLE DAVIT		1 SET			CK69152
C	NOZZLE DETAIL		1 SET			CK69151
B	JACKET DETAIL		1 SET			CK69150
A	SHELL DETAIL		1 SET			CK69149

(W/PLUG)	SCALD OUT	
(W/PLUG)	DRAIN	
(W/PLUG)	DRAIN	
(W/PLUG)	VENT	
	SO4 OUT	
	SO4 IN	
	PR IN	
(W/O W/CORE)	MANHOLE	10" (254)
(W/O W/CORE)	SPARE	6" (152.4)
	PR IN	SEE DWG
	RICH IN	8" (203.2)
	ICW IN	8" (203.2)
	A: SPT-003	8" (203.2)
	B: SPT-002	3 3/4" (91.1) *
	PR OUT	8" (203.2)
	AGITATOR MOUNT	SEE DWG
	STEADY BEARING	SEE DWG
	SV. SRP-001	8" (203.2)
	SL OUT	3 3/4" (91.1) *
	SL OUT	3 3/4" (91.1) *
	PR OUT	8" (203.2)
(W/INT. PIPE & CORE)	PR IN	11" (279.4)
(W/INT. PIPE & CORE)	SL IN	11" (279.4)
	SERVICE	W2L PROJECTION (FROM SHELL OUTSIDE) W2L PROJECTION (FROM SHELL INSIDE)

CUSTOMER'S APPROVAL

NOTE

APPROVED AS NOTED  
 HOLD  
 RESUBMIT FOR APPROVAL.

This approval does not relieve Supplier of his responsibility to meet purchase order conditions relating to duty, specifications, materials, design, construction and delivery requirements.

**ASME SECT. VIII**  
**Uスタンプ付工事用**

MITSUI ENGINEERING & SHIPBUILDING CO., LTD.

PROCESS EQUIPMENT  
 ENGINEERING DEPARTMENT

TITLE  
**IMPACT COPOLYMER PROJECT**

DRWER: H. Kato  
 CHECK: H. Kato  
 APPR: H. Kato

DATE: 1983-9-27

JOB CLASS NO. K3 51

WORKS NO. TK6144 UMANO

REV NO. CK69148

NO.	REV.	DATE	BY	CHK.	APP.
1					
2					
3					
4					
5					
6					
7					
8					
9					
10					
11					
12					
13					
14					
15					
16					
17					
18					
19					
20					

NO.	REV.	DATE	BY	CHK.	APP.
1					
2					
3					
4					
5					
6					
7					
8					
9					
10					
11					
12					
13					
14					
15					
16					
17					
18					
19					
20					