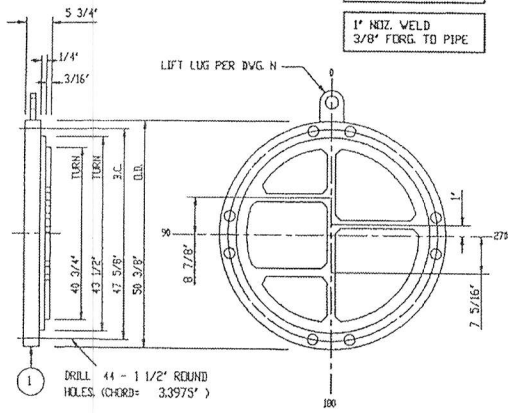


S & B Engineers & Constructors, Ltd.
Houston, Texas
VENDOR INFORMATION FOR APPROVAL
APPROVED: Proceed with Fabrication
CREATED: RES-1501
DATE: 11/13/06
BY: [Signature]

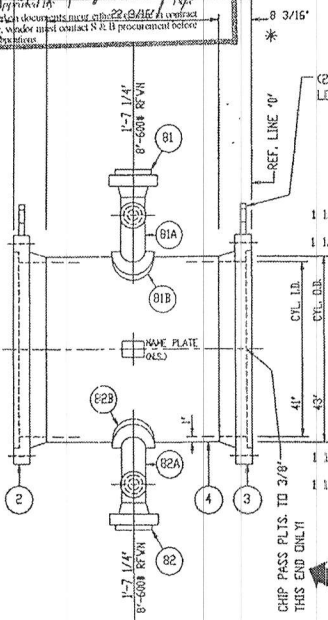
- COVER NOTES:**
- 1) MACHINE ALL COVER SURFACES TO 250 RMS EXCEPT GASKET SURFACE TO BE 125 RMS.
 - 2) ALL COVER PASS PLATE GROOVE WIDTHS TO BE 5/8" WIDE.
 - 3) ALL COVER PASS PLATE GROOVE JUNCTIONS TO BE NOTCHED 3/8" AT 45 Deg.

- 8" NOZ. WELD
3/8" NOZ. TO PAD
3/4" PAD TO CYL.
- 1 1/2" NOZ. WELD
3/8" FORG. TO PIPE
- 1" NOZ. WELD
3/8" FORG. TO PIPE

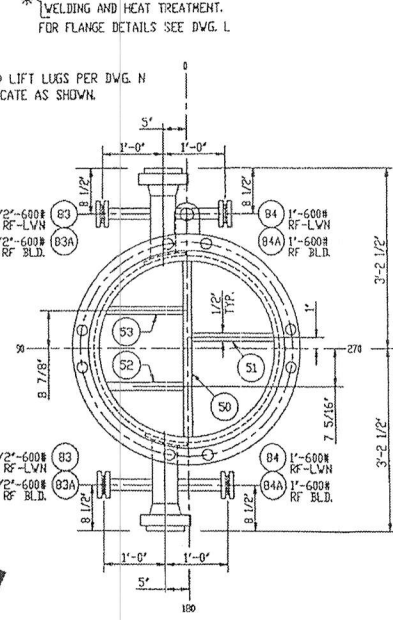
* MACHINE GASKET FACING AFTER ALL WELDING AND HEAT TREATMENT. FOR FLANGE DETAILS SEE DWG. L



CHANNEL-COVER DETAIL



CHANNEL SIDE VIEW



CHANNEL END VIEW

- NOTES:**
- 1) FOR JOB NOTES SEE DWG. X.
 - 2) FOR WELD AND BEVEL DETAILS SEE DWG. W.
 - 3) FOR TUBESIDE N.P. BRACKET & LIFT LUG DETAILS SEE DWG. N.

TWO REQUIRED

CUSTOMER: IAG/BIG WEST OF CALIFORNIA
P.O. NO.: 20-25601-P-12-010
TAG: 42-E22A/B
SERVICE: MAIN COLUMN BOTTOMS STEAM GENERATOR

NO.	DATE	REVISIONS

FRONT CHANNEL DETAILS	
DRAWN BY D. TAYLOR	Stealtak TULSA, OK.
DATE 10-6-6	
CHKD. BY DD	DWG. NO. 06S-2038-D